



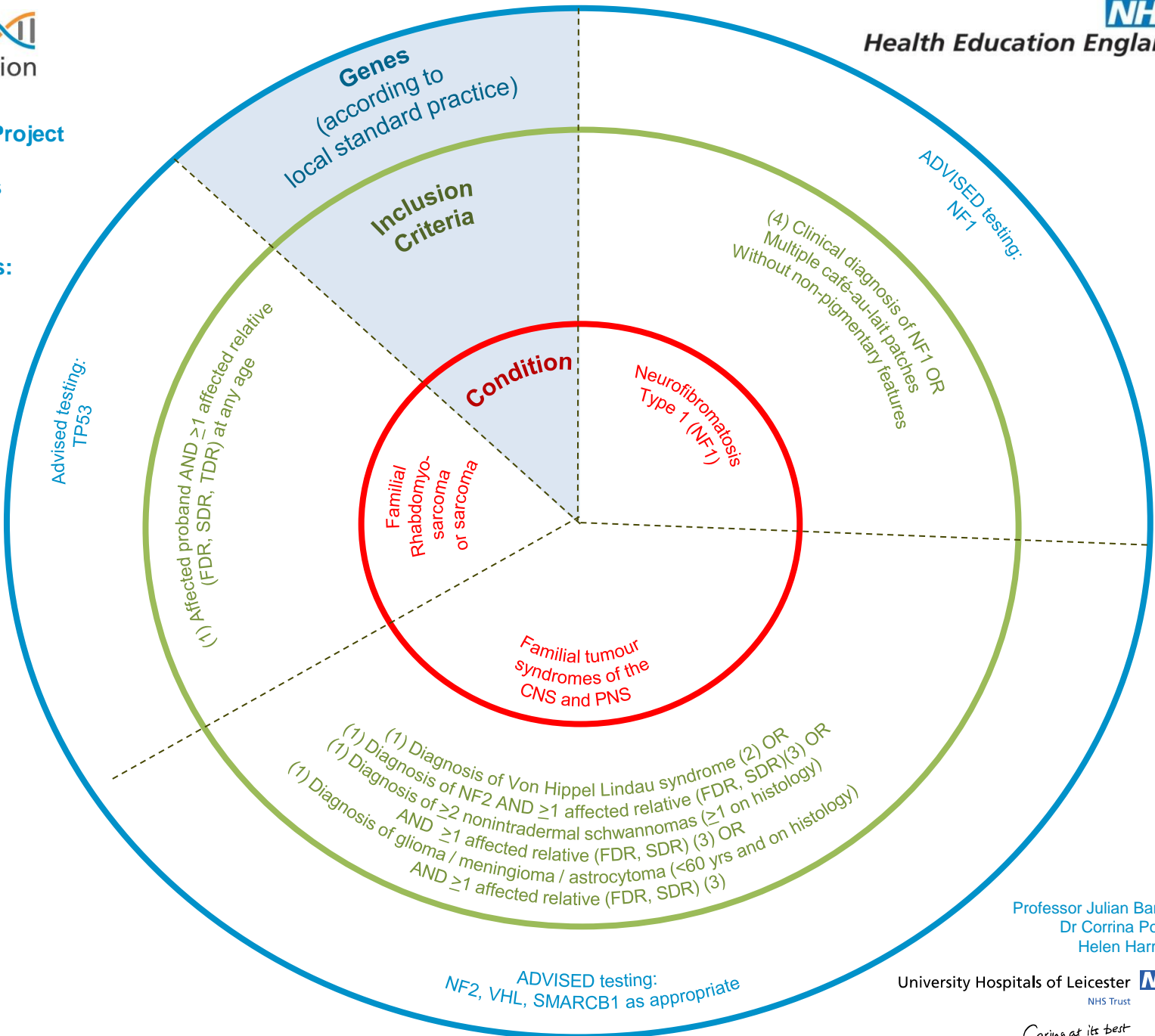
Rare Diseases: Tumour Syndromes: Muscle and nerve

(1) Recruitment should NOT include unaffected relatives unless part of a TRIO/DUO. Multiple affected relatives are preferable to singleton cases.

(2) Samples from proband and any affected relative

(3) Samples from proband and >1 affected relative

(4) If no previous genetic testing, advise recruitment as singleton. However, if previous genetic testing was normal then recruit with additional affected family members.



Professor Julian Barwell  
Dr Corrina Powell  
Helen Harrison

University Hospitals of Leicester NHS Trust

Caring at its best