



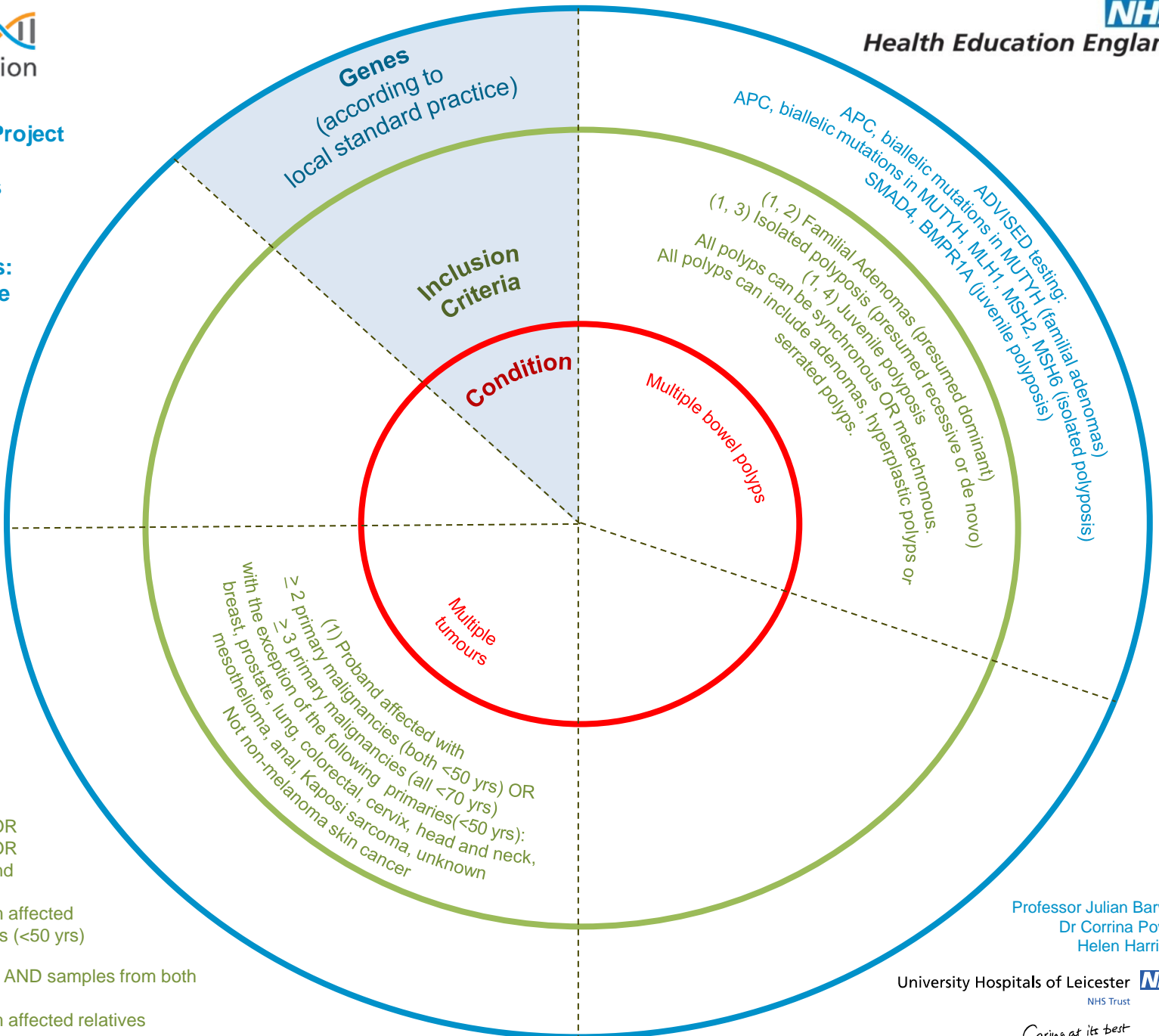
Rare Diseases:
Tumour Syndromes:
GI tract and multiple tumours

(1)
Recruitment should NOT include unaffected relatives unless part of a TRIO/DUO. Multiple affected relatives are preferable to singleton cases.

- (2)
- Proband with >10 polyps (<50 yrs) AND FDR with >10 polyps (<50 yrs) AND
 - ≥3 adenomas confirmed in proband and FDR
 - Additional samples from affected FDR / SDR with >5 polyps (<50 yrs)

- (3)
- Proband with:
 - (a) >25 polyps (<50 yrs) OR
 - (b) >10 polyps (<25 yrs) OR
 - (c) >10 polyps (<40 yrs and consanguineous)
 - Additional samples from affected relatives with >10 polyps (<50 yrs)

- (4)
- Proband with >2 polyps AND samples from both parents
 - Additional samples from affected relatives



Professor Julian Barwell
Dr Corrina Powell
Helen Harrison