



Genomics Education Programme

100,000 Genomes Project Eligibility wheels A tool for clinicians

Rare Diseases: Tumour Syndromes: GI tract and skin

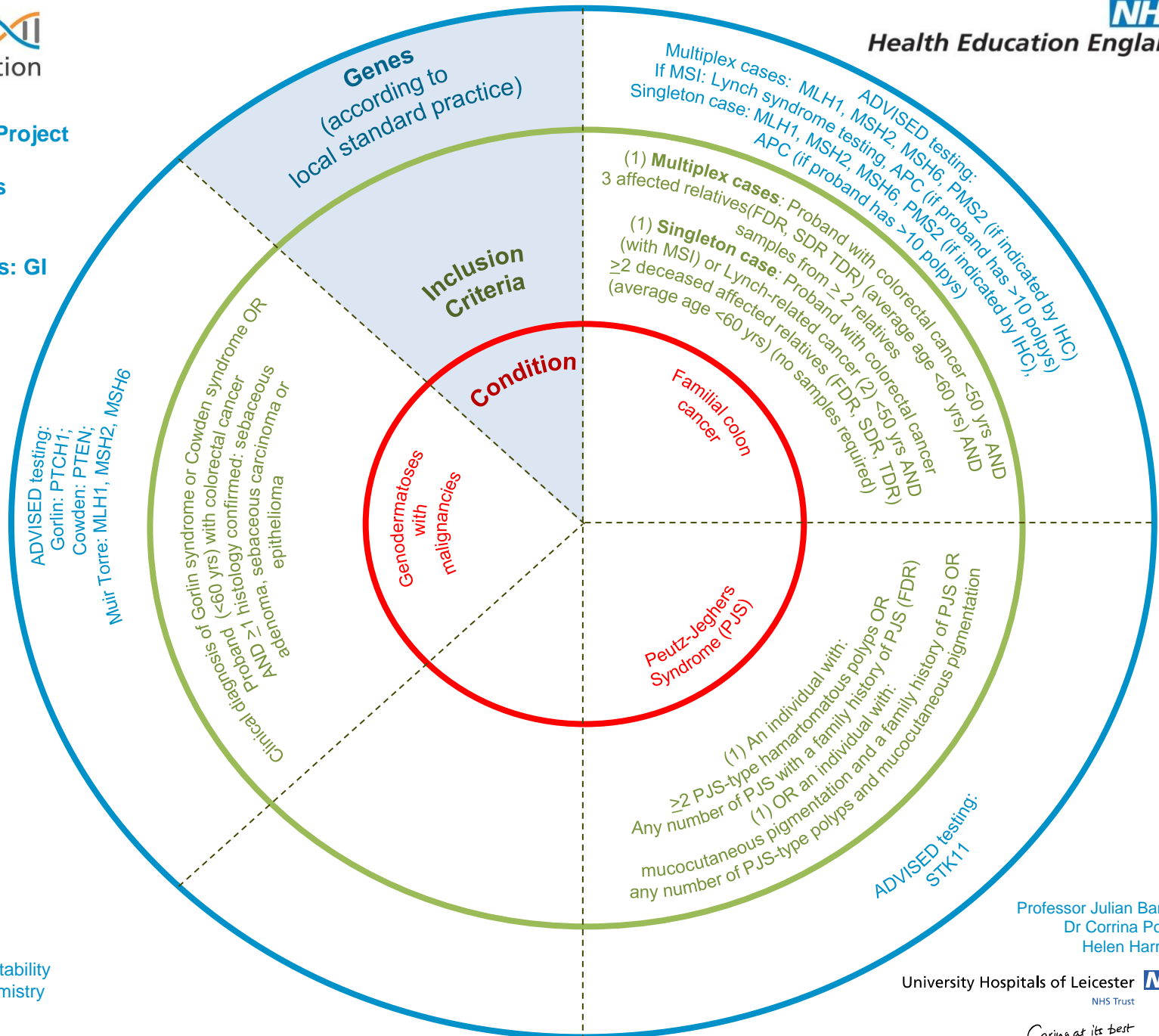
(1) Recruitment should NOT include unaffected relatives unless part of a TRIO/DUO. Multiple affected relatives are preferable to singleton cases.

- (2)
- Colorectal cancer
 - Endometrial cancer
 - Ovarian cancer
 - Pancreatic cancer
 - Ureter cancer
 - Benign skin tumours
 - Sebaceous adenoma
 - Sebaceous epithelioma
 - Keratoacanthoma
 - Skin cancers
 - Sebaceous carcinoma
 - Transitional cell cancer of renal pelvis
 - Gastric cancer
 - Hepatobiliary tract cancer
 - Small bowel cancer
 - Glioblastoma

MSI = microsatellite instability
IHC = immunohistochemistry



Health Education England



Professor Julian Barwell
Dr Corrina Powell
Helen Harrison

University Hospitals of Leicester NHS Trust

Caring at its best