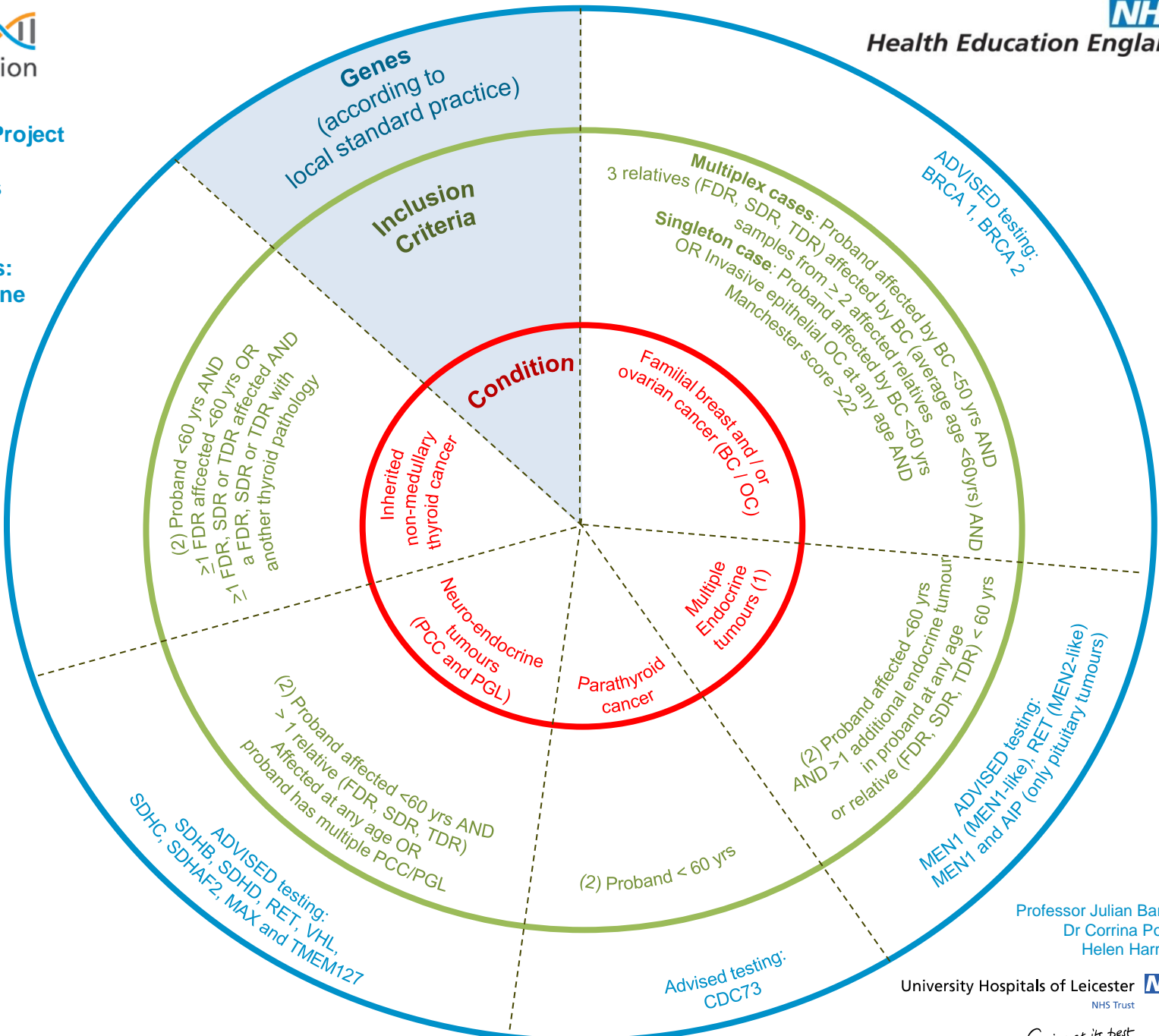




- (1) endocrine tumours:
- parathyroid hyperplasia
 - pituitary adenoma,
 - GIT neuroendocrine tumour
 - carcinoid tumours
 - adrenocortical tumours
 - medullary thyroid carcinoma
 - Pheochromocytoma

(2) Recruitment should NOT include unaffected relatives unless part of a TRIO/DUO. Multiple affected relatives are preferable to singleton cases.



Professor Julian Barwell
Dr Corrina Powell
Helen Harrison

University Hospitals of Leicester NHS Trust

Caring at its best