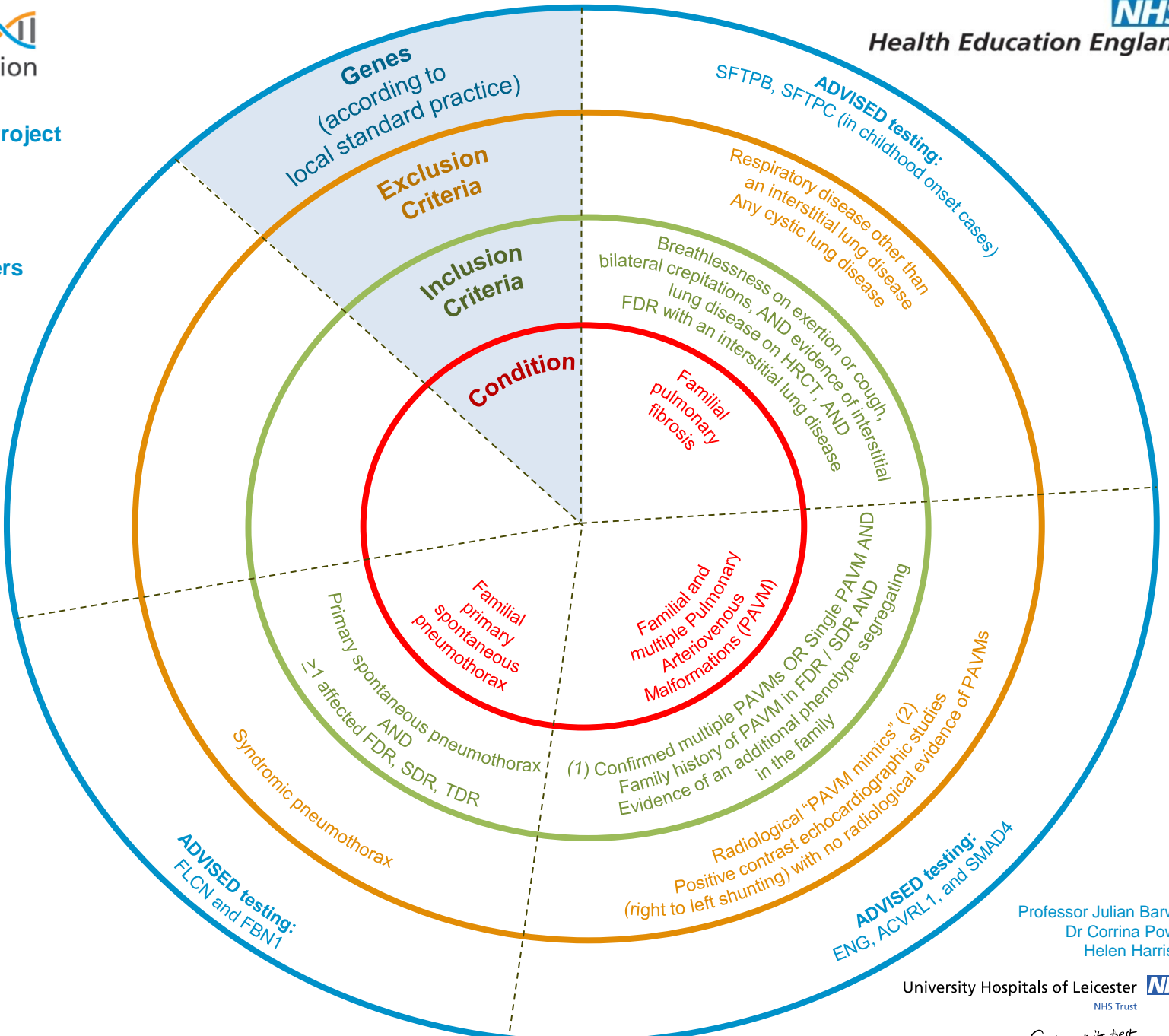




Rare Diseases: Respiratory disorders

(1) Recruitment should NOT include unaffected relatives unless part of a TRIO/DUO. Multiple affected relatives are preferable to singleton cases.

- (2)
  - Pulmonary artery aneurysms
  - Pulmonary varices
  - Bronchocoeles
  - Vascular tumours



Professor Julian Barwell  
Dr Corrina Powell  
Helen Harrison