



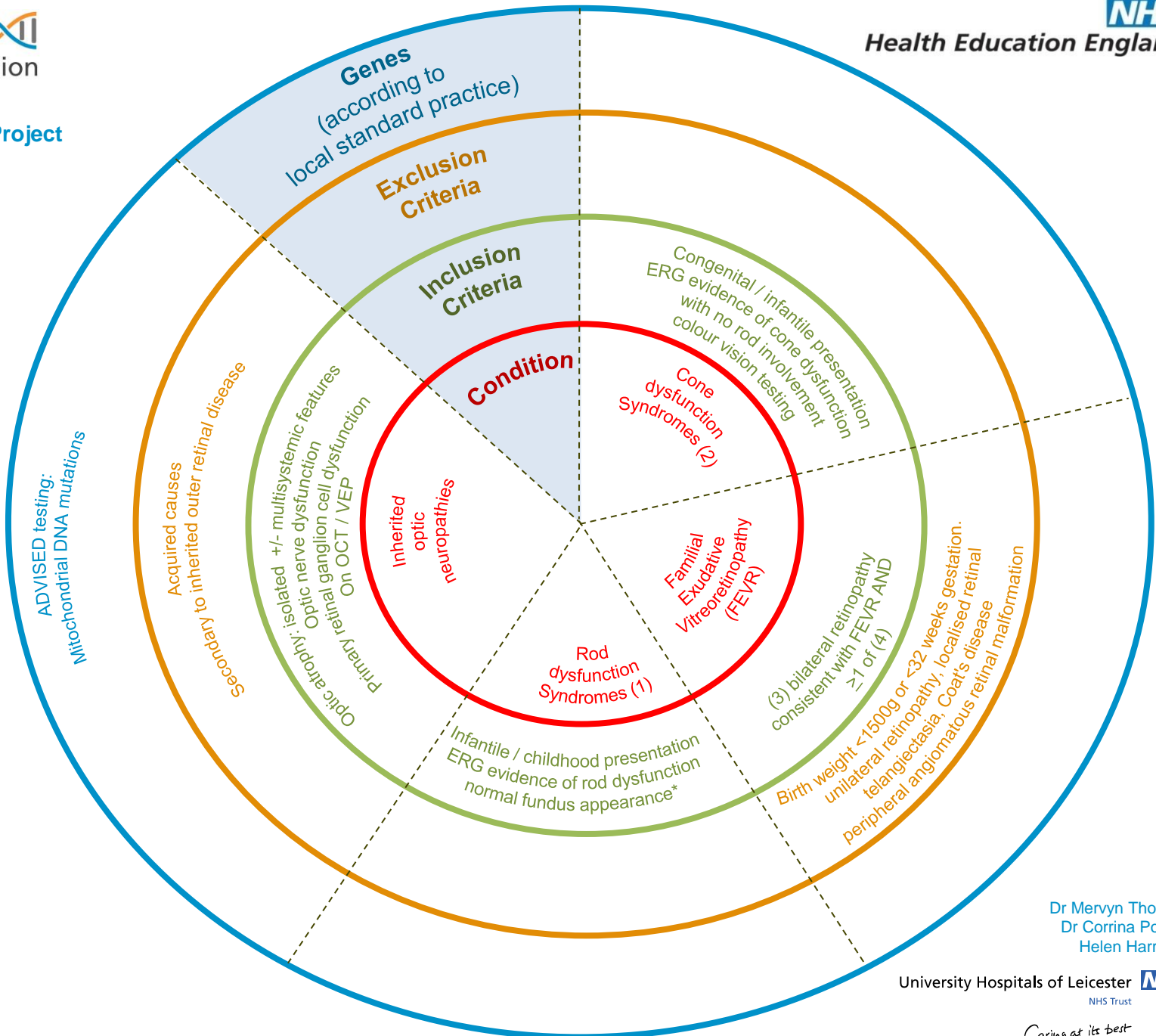
Rare Diseases: Ophthalmological disorders - Posterior segment abnormalities #1

- (1)
  - Non-progressive poor night vision from infancy
  - Congenital stationary night blindness
  - Oguchi disease\*
  - Åland Island eye disease
  - Fundus albipunctatus\*

- (2)
  - Complete/incomplete achromatopsia
  - Blue cone monochromatism
  - Oligocone trichromacy
  - Bradyopsia
  - Borholm eye disease

(3)  
Recruitment should NOT include unaffected relatives except in severe/syndromic cases. Multiple affected relatives are preferable to singleton cases

- (4)
  - peripheral retinal avascularity
  - subretinal or intraretinal exudation
  - retinal detachment
  - neovascularisation +/- vitreous haemorrhage



Dr Mervyn Thomas  
Dr Corrina Powell  
Helen Harrison