

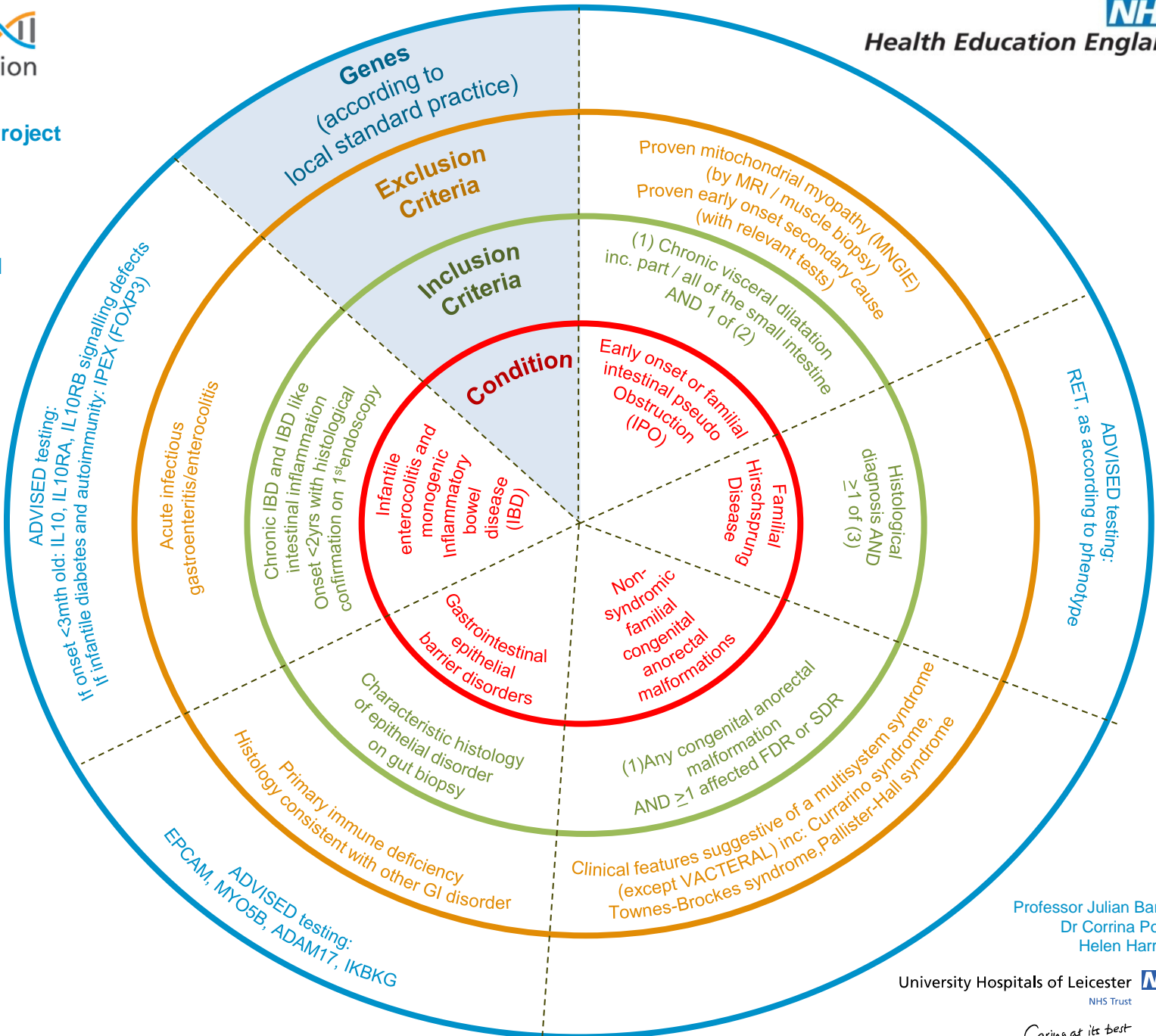


Rare Diseases: Gastroenterological disorders - Gastrointestinal disorders

(1) Recruitment should NOT include unaffected relatives except in severe / syndromic cases. Multiple affected relatives are preferable to singleton cases

(2) • Diagnosis <1yr old • Diagnosis at any age with ≥1 FDR or SDR affected with IPO or another severe digestive motility disorder

(3) • ≥2 affected FDR or SDR • consanguinity • Syndromic or with other anomalies



Professor Julian Barwell
Dr Corrina Powell
Helen Harrison