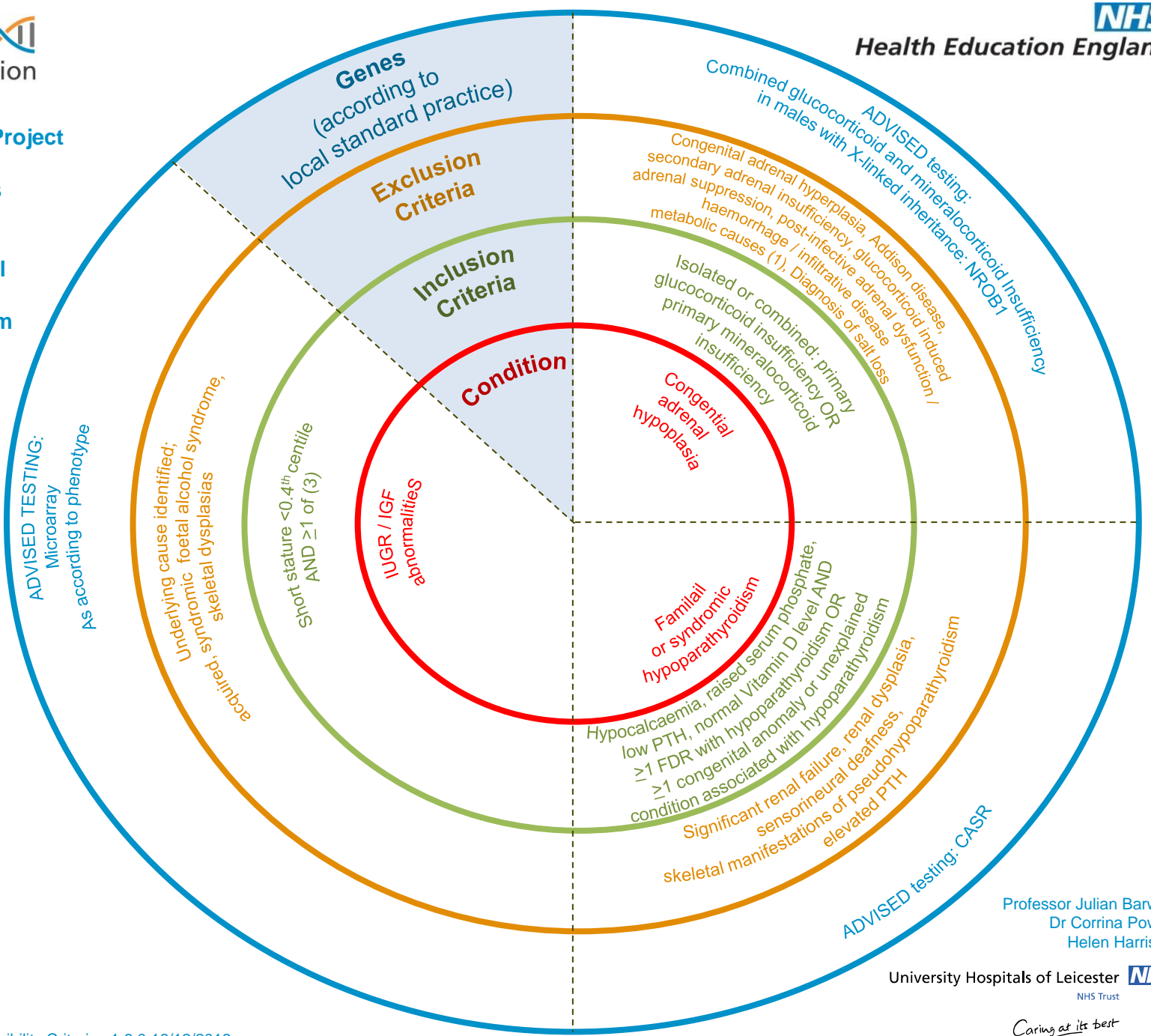




Rare Diseases: Endocrine - Adrenal disorders, disorders of calcium homeostasis and growth hormone disorders

- (1)
- X-linked adrenoleukodystrophy
 - Mitochondrial disorders
 - Wolman syndrome
- (3)
- Small for gestational age ± IUGR
 - Body disproportion
 - Dysmorphic features
 - Abnormal GH-IGF axis
 - Other pituitary hormonal deficiencies
 - Family history of short stature and / or consanguinity
 - Abnormalities of the eyes, ears, brain and learning difficulties



Professor Julian Barwell
Dr Corrina Powell
Helen Harrison