



Genomics Education Programme

100,000 Genomes Project Eligibility wheels
A tool for clinicians

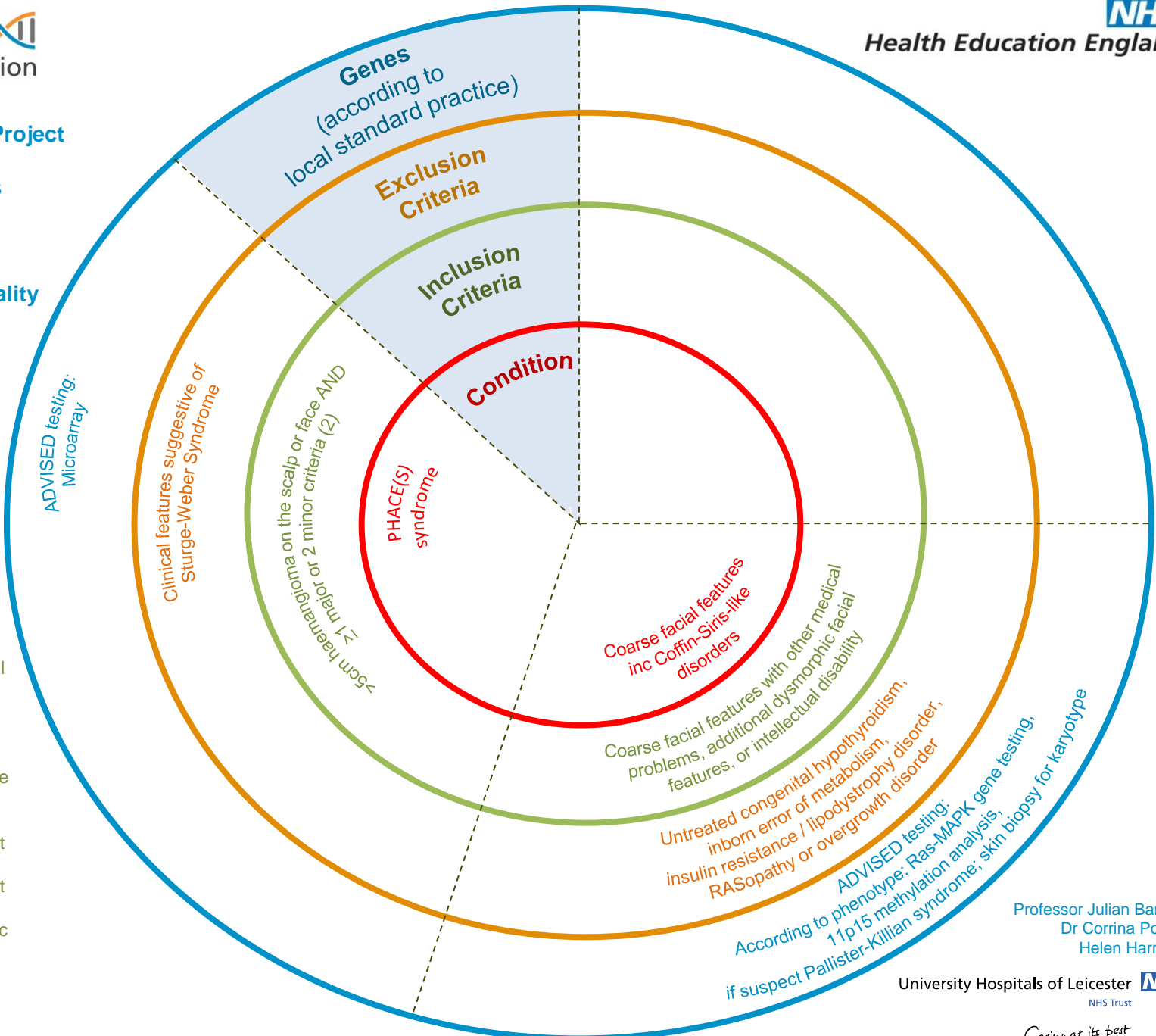
Rare Diseases: Dysmorphic and congenital abnormality syndromes - Dysmorphic Disorders #2

(2)
MAJOR:

- Anomaly of major cerebral arteries
- Posterior fossa anomaly
- Aortic arch anomaly
- Ocular posterior segment anomaly
- Sternal defect

MINOR:

- Persistent embryonic artery (except trigeminal artery)
- Enhancing extra-axial lesion (suggestive of intracranial haemangioma or midline anomaly or neuronal migration defect)
- Ventricular septal defect or right aortic arch
- Ocular anterior segment anomaly
- Hypopituitarism / ectopic thyroid



Professor Julian Barwell
Dr Corrina Powell
Helen Harrison

University Hospitals of Leicester NHS Trust

Caring at its best