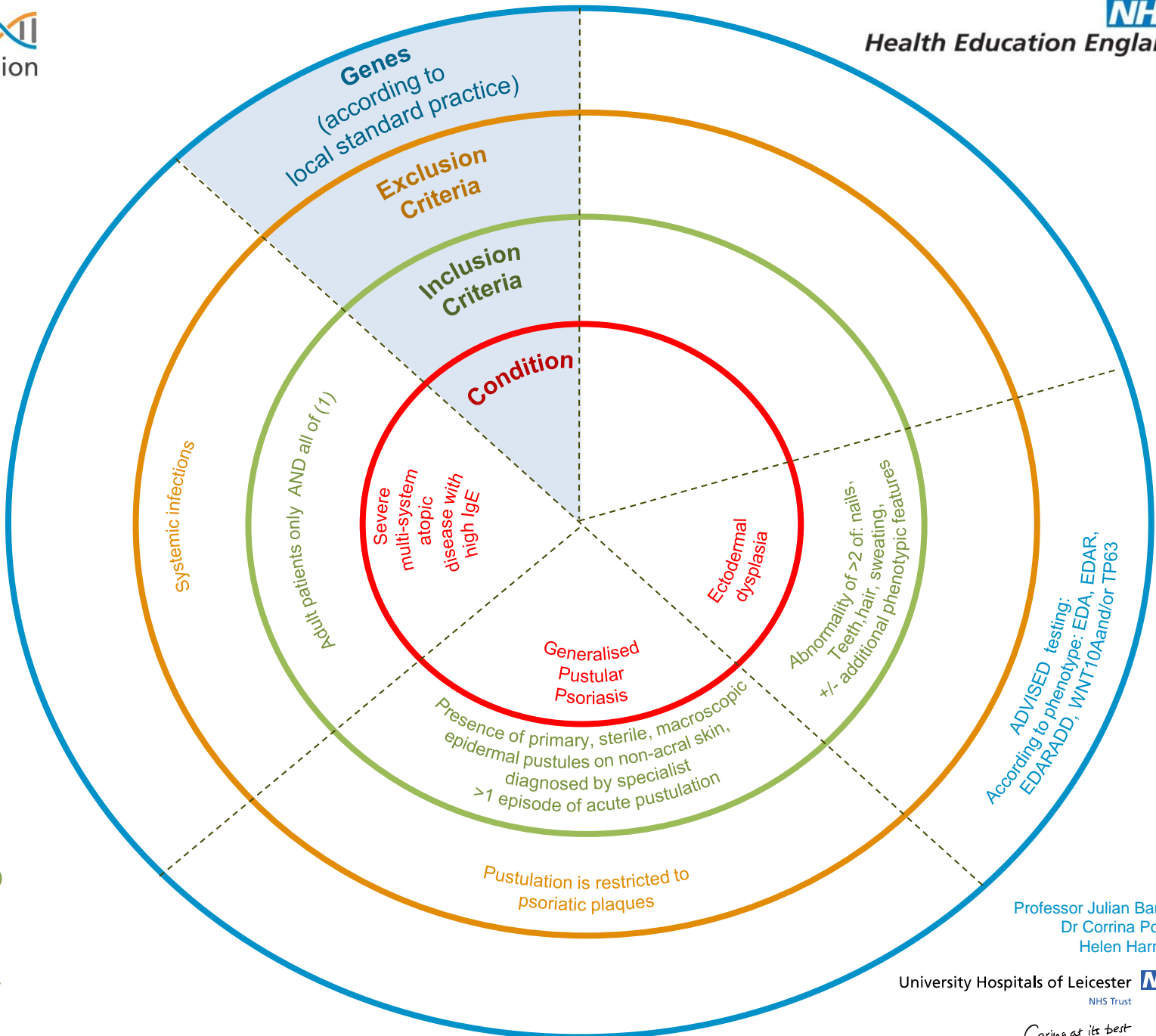




Rare Diseases:
Dermatological disorders - Atopy, autoimmune skin disorders and Ectodermal dysplasias

- (1)
- Onset in early childhood (often age <1)
 - Severe persistent eczema (requiring treatment above safe use of potent topical steroids). OR when topical calcineurin inhibitors are an effective first line treatment and serum IgE >10000
 - Recurrent or chronic S. aureus skin infections OR requires systemic immunosuppressive treatment
 - Asthma (mild to severe)
 - High IgE levels >5000
 - Sensitised to a wide variety of aero-allergens and food allergens (measured by ImmunoCAP tests)



Professor Julian Barwell
Dr Corrina Powell
Helen Harrison