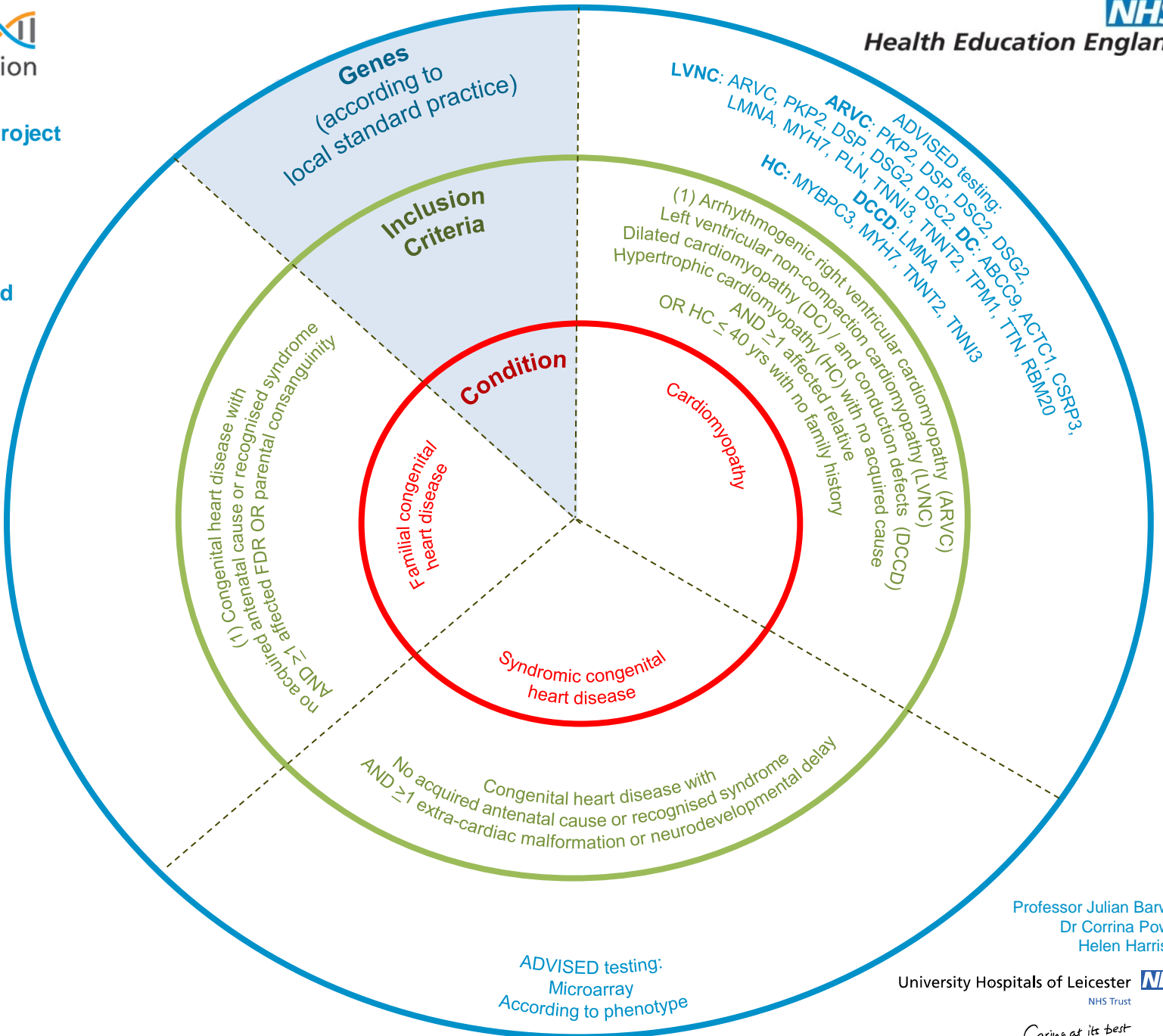




Rare Diseases: Cardiology - Cardiomyopathy and Congenital heart disease

(1) Recruitment should NOT include unaffected relatives except in severe / syndromic cases. Multiple affected relatives are preferable to singleton cases.



Professor Julian Barwell
Dr Corrina Powell
Helen Harrison

University Hospitals of Leicester NHS Trust

Caring at its best