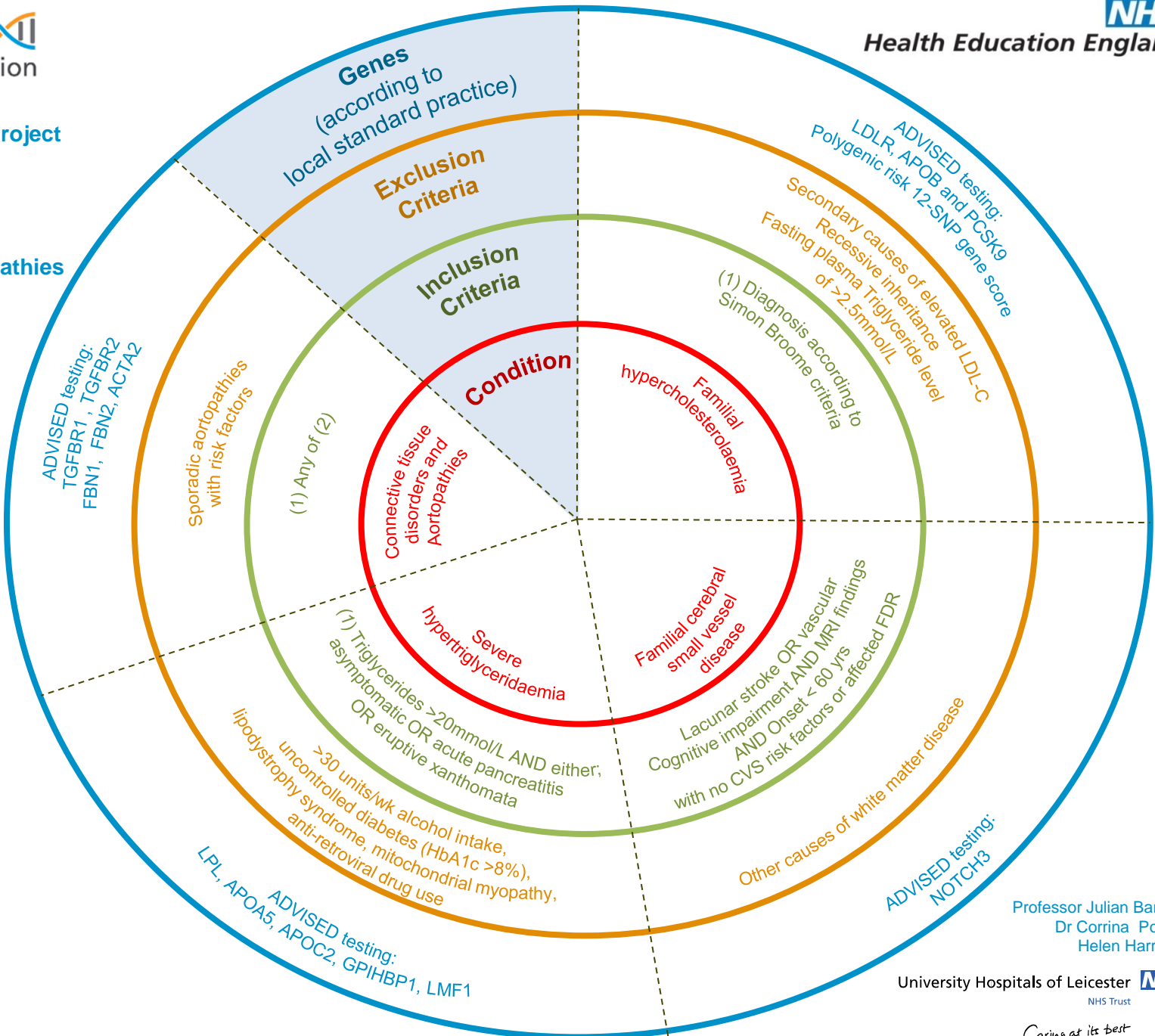




Rare Diseases: Cardiology - Aortopathies and Arteriopathies

(1) Recruitment should NOT include unaffected relatives except in severe / syndromic cases. Multiple affected relatives are preferable to singleton cases.

- (2)
- Marfan syndrome
 - Beals syndrome
 - Loeys-Dietz syndrome / related conditions
 - Thoracic aortopathy <50 years with no risk factors
 - Familial Thoracic Aortic Aneurysm and dissection



Professor Julian Barwell
Dr Corrina Powell
Helen Harrison

University Hospitals of Leicester NHS Trust

Caring at its best