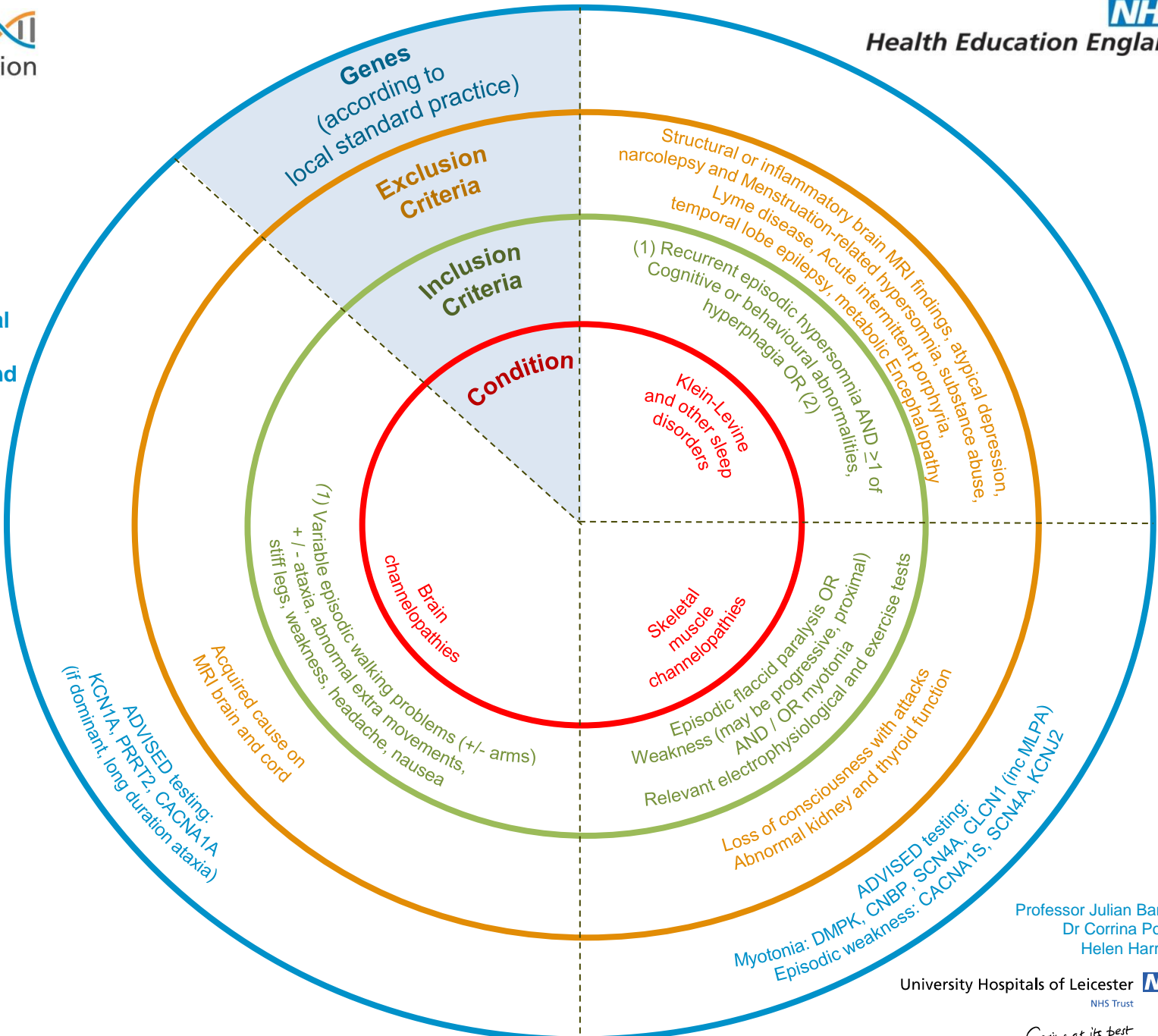




(1) Recruitment should NOT include unaffected relatives unless part of a TRIO/DUO. Multiple affected relatives are preferable to singleton cases.

- (2)
- Cataplexy, hypnagogic hallucinations, sleep paralysis and affected relatives OR
 - Involuntary kicking and jerking movements of the limbs during sleep and affected relatives OR
 - Parasomnias (sleep walking, night terrors, sleep eating disorders) and affected relatives



Professor Julian Barwell
Dr Corrina Powell
Helen Harrison