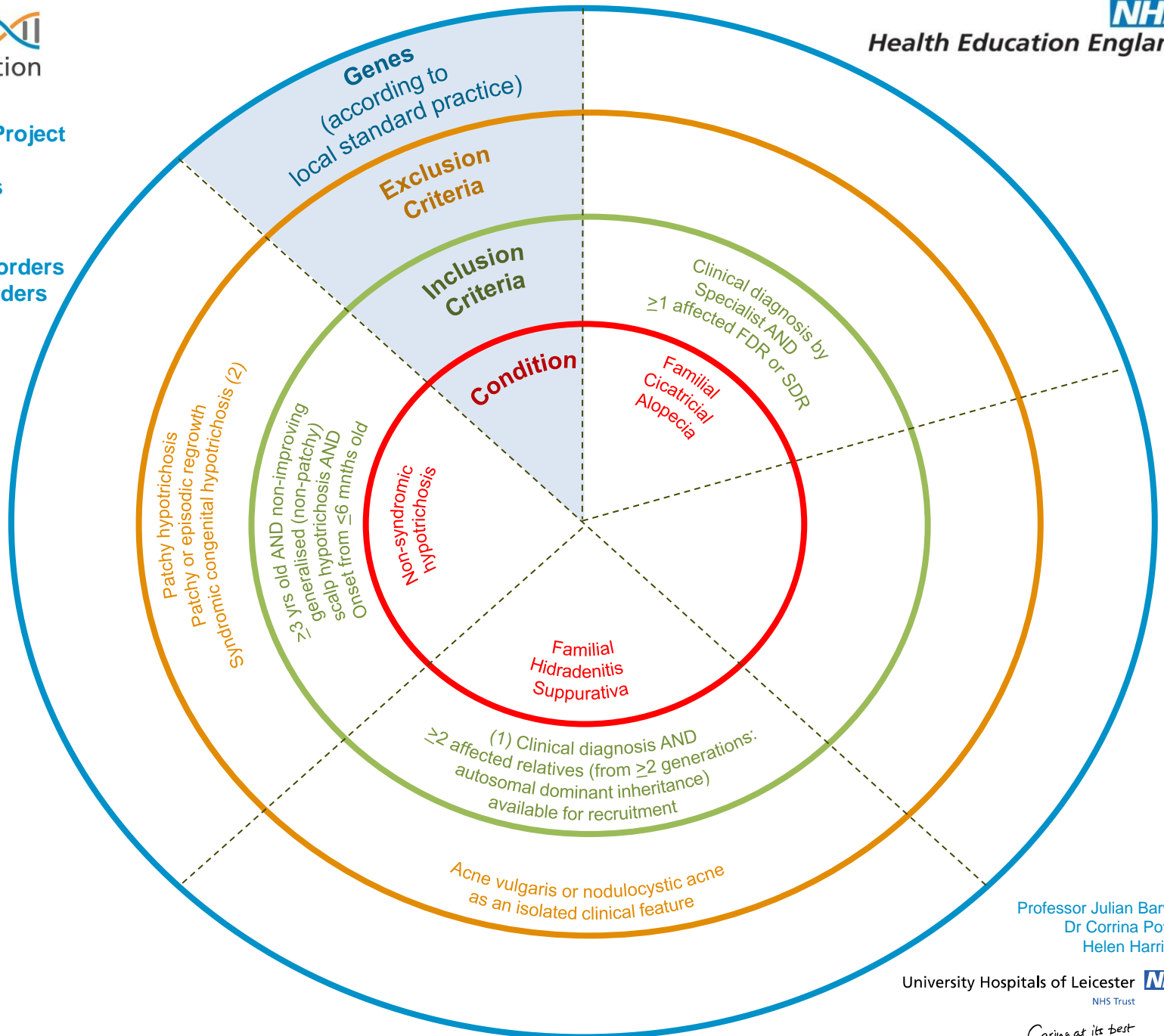




(1)  
Recruitment should NOT include unaffected relatives unless part of a TRIO/DUO. Multiple affected relatives are preferable to singleton cases.

- (2)
- Ectodermal dysplasias
  - Alopecia with vitamin D resistant rickets
  - Hypotrichosis with dysmorphic facies
  - Hypotrichosis with spondyloepimetaphyseal dysplasia



Professor Julian Barwell  
Dr Corrina Powell  
Helen Harrison

University Hospitals of Leicester NHS Trust

*Caring at its best*