



X-linked recessive inheritance: affected father

This communication aid has been produced for clinicians to help support and guide conversations about X-linked recessive inheritance with their patients.

What causes X-linked recessive conditions?

We all have over 20,000 genes, which provide instructions for how our body works.

Our genes are packaged into structures called **chromosomes**. Our chromosomes come in pairs, with one inherited from each parent.

Most chromosomes (the autosomes) are numbered 1–22. Our sex chromosomes are called X or Y, and usually determine sex assigned at birth.

- Females typically have two X chromosomes.
- Males typically have one X and one Y chromosome.

X-linked recessive conditions are caused by **changes in genes** that are located on the X chromosome.

XY



Males who have a change on their X chromosome would be expected to develop the condition.

XX



Females who have a change on one of their two copies of the X chromosome are known as carriers. Usually, they would not develop the condition. In some cases, they may develop a milder version of the condition.

How are X-linked recessive conditions inherited?

When an affected male has a child with someone who is not a carrier, male children will inherit their Y chromosome and female children will inherit their X chromosome with the change.

This means, for every pregnancy:

- All male children will be unaffected and not carriers of the condition.
- All female children will be carriers for the condition and usually unaffected.

Key terms

Chromosomes: Packages of DNA which are found in our cells.

Gene change: Changes in a gene or chromosome used to be referred to as 'mutations'. Now, they are more commonly called changes, alterations or variants.

Want to learn more?

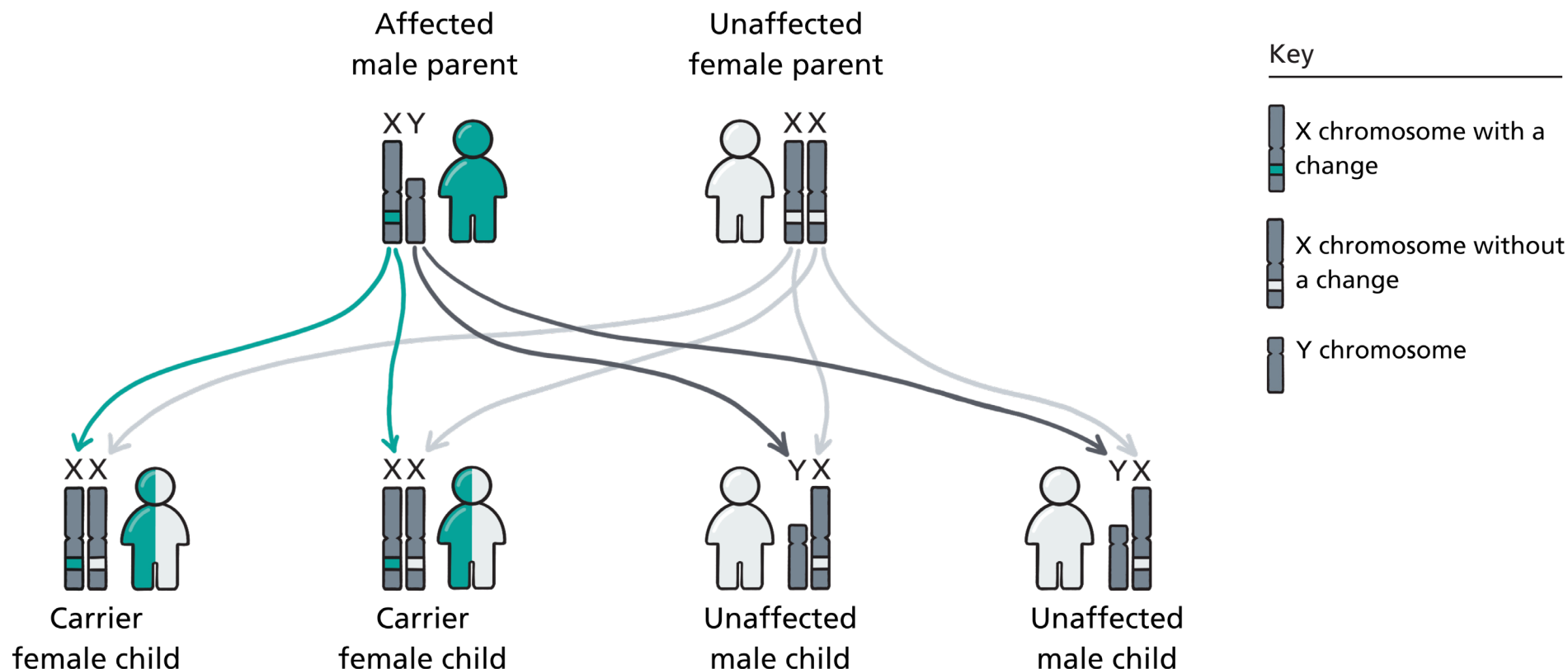
Scan to watch an animation explaining X-linked recessive inheritance





X-linked recessive inheritance: affected father

This communication aid has been produced for clinicians to help support and guide conversations about X-linked recessive inheritance with their patients.



All female (XX) children
will be carriers of the
condition

All male (XY)
children will be
unaffected



Please scan to leave feedback
about this resource



Last reviewed: 14 February 2025